

# FHO3000L Mini OTDR



FHO3000L mini OTDR is a multi-functional optical measuring instrument, which integrates auto OTDR, expert OTDR, Event map, optical power meter, visual fault locator, adjustable stable laser source, optical loss test, RJ45 cable length/sequence test, RJ45 cable digital tracker, flashlight. It has 5 inches touch screen and keys. It is the right assistant for optical cable construction, installation and maintenance, project acceptance and on-site repair.

## Key features

- 1: Automatic OTDR: one click test without complex settings
- 2: Expert OTDR: professional measurement, curve, list and map are displayed at the same time
- 3: Fiber event map with Pass/Fail judgement, more intuitive and intelligent optical fiber link test
- 4: Twelve functions in one, smart mini multifunction OTDR
- 5: "Computer level" file management
- 6: 20hours ultra long standby time

90km

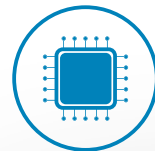
90km is measurable

2.5/8m

Small deadzone



Capacitive touch screen

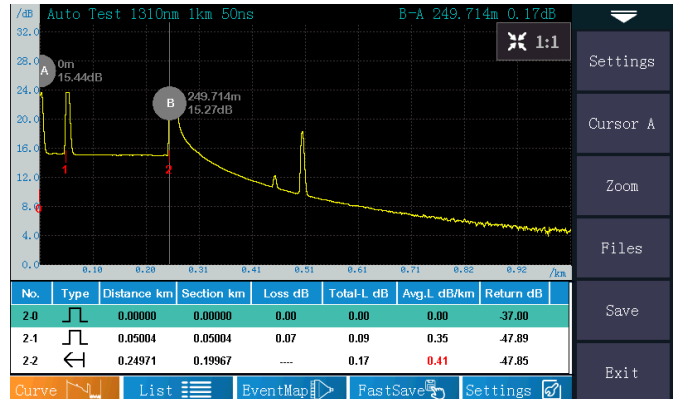
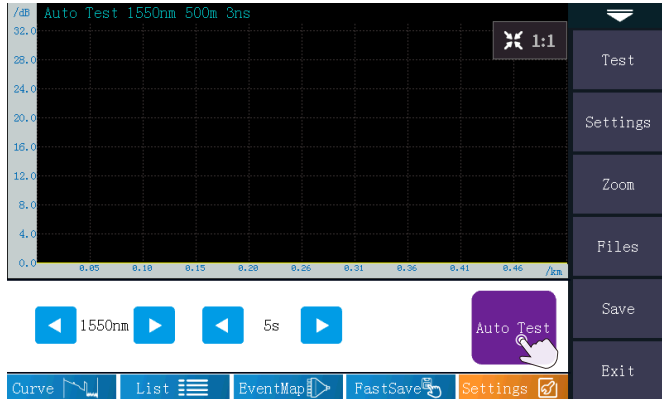


High performance CPU

## Auto OTDR Test mode

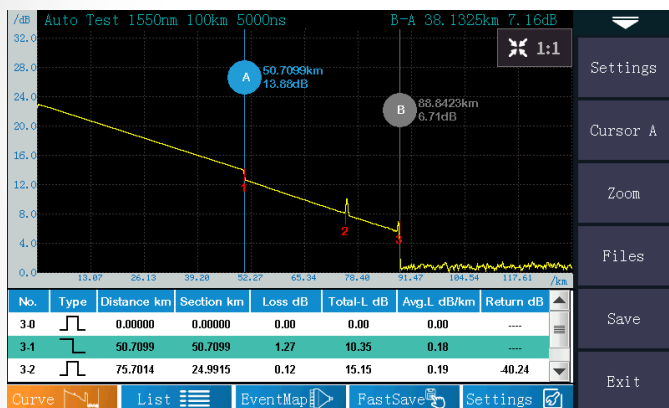
### No need complex settings

Auto mode is for inexperienced testers, there is no need for complex parameter setting, one key automatic test and automatic analysis.



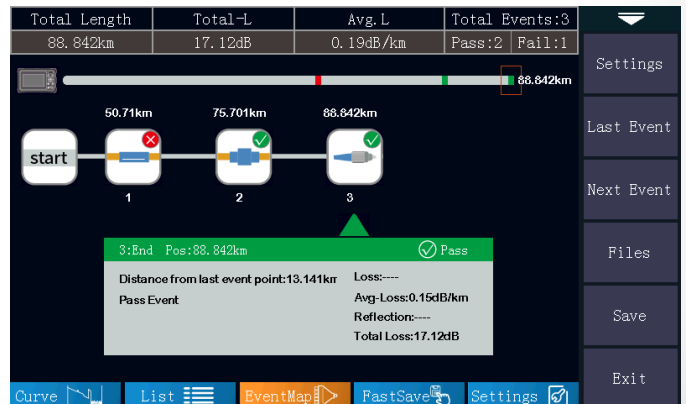
## Professional Test mode: OTDR curve+ Event map

OTDR curve and event map can be displayed directly in one test. Whether you are a test expert or an inexperienced tester, you can easily analyze optical fiber links.



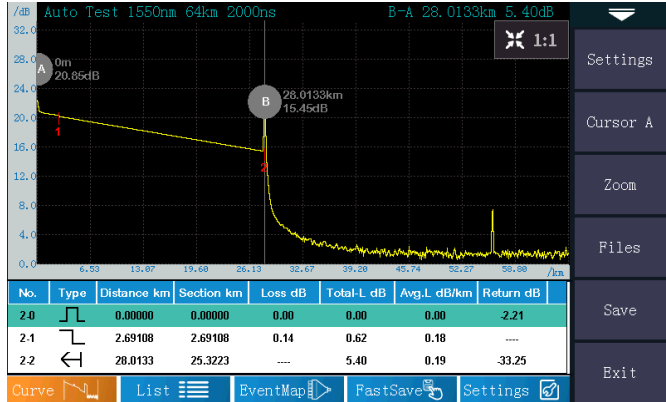
Automatically positioning fiber end point.

Automatically determine the Pass/Fail of the event according to the threshold.



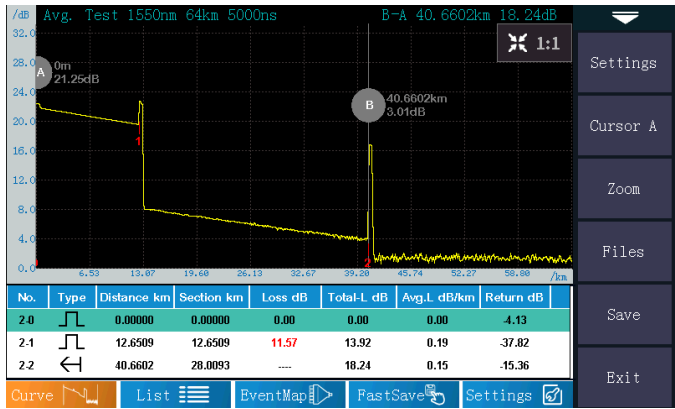
## Professional test performance

High performance CPU with high precision algorithm provides accurate OTDR test curve and event list.



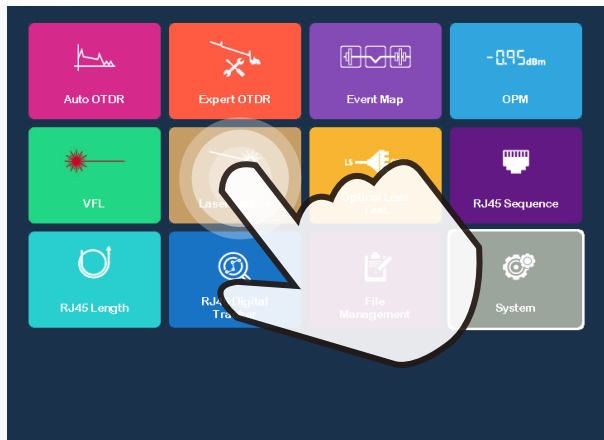
Fusion point with small loss can also be accurately identified.

26dB dynamic range can easily pass through the splitter with small deadzone. (maximum 1x32 splitter)



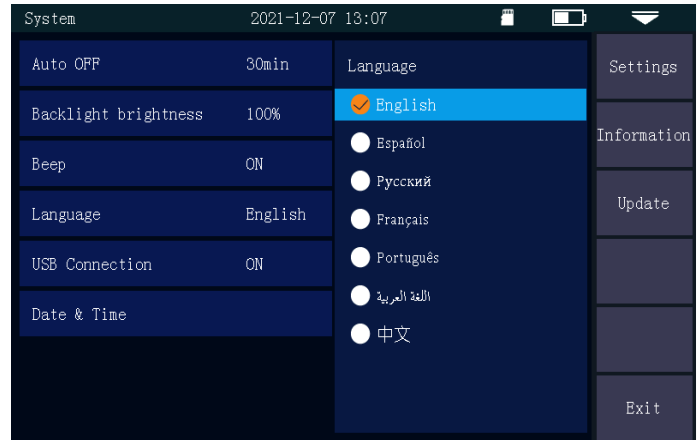
## 5-inch capacitive screen

Support screenshot and multi touch to zoom in, zoom out, move the curve/cursor.



## Multi language optional

Equipped with multiple languages, suitable for operators in various countries



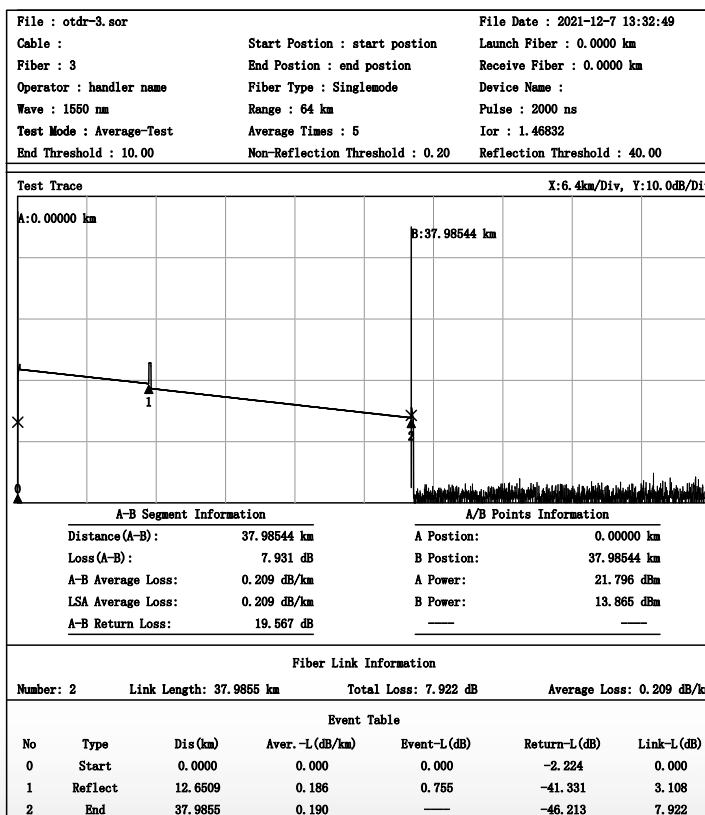
## 8GB Mass storage, automatic/manual file saving in SOR format

A variety of file naming methods, optical fiber number, optical cable location and operator can be set before testing.



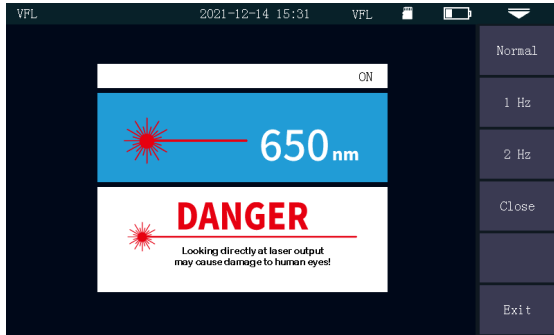
## Reports printing is simple and convenient

PC software is built-in the OTDR micro SD card, Connect PC to install software and export files. Support batch printing of reports at a time, and PDF reports can be exported.

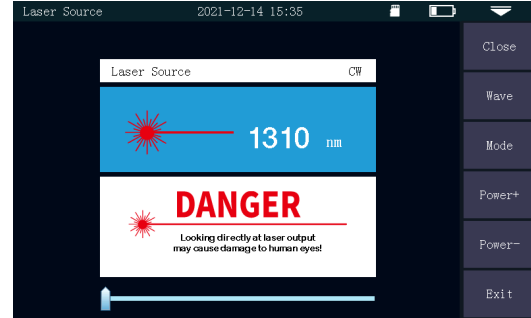


## Multiple test functions

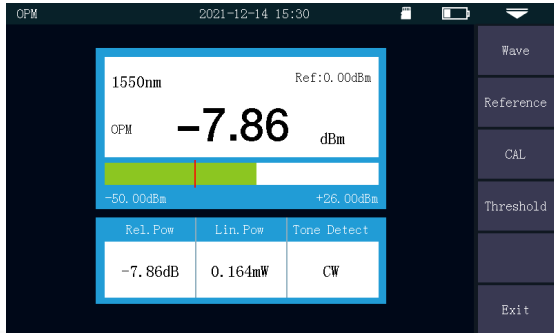
650nm 10mw VFL



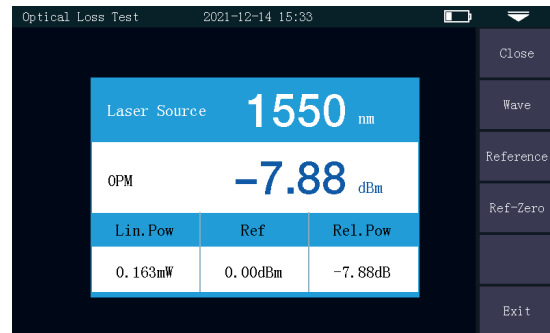
1310/1550nm Stable OLS



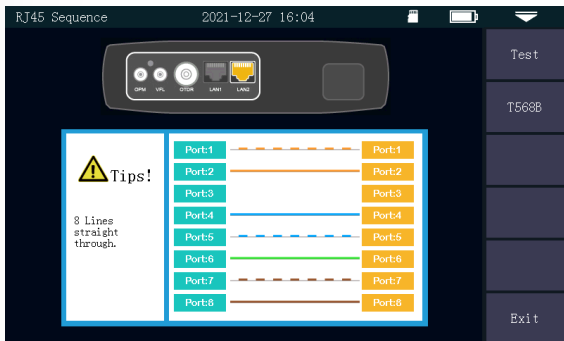
OPM



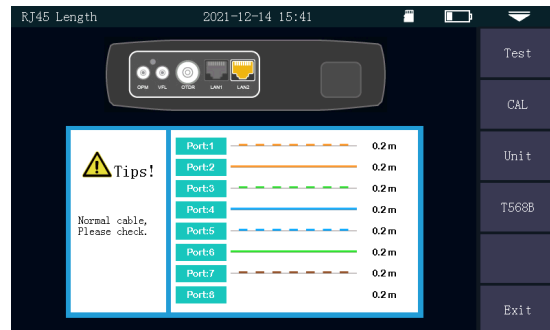
Optical loss test



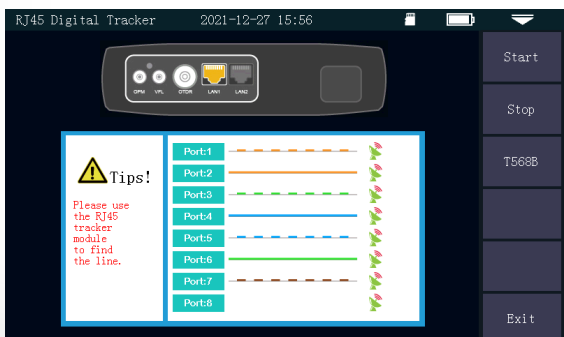
RJ45 cable sequence test



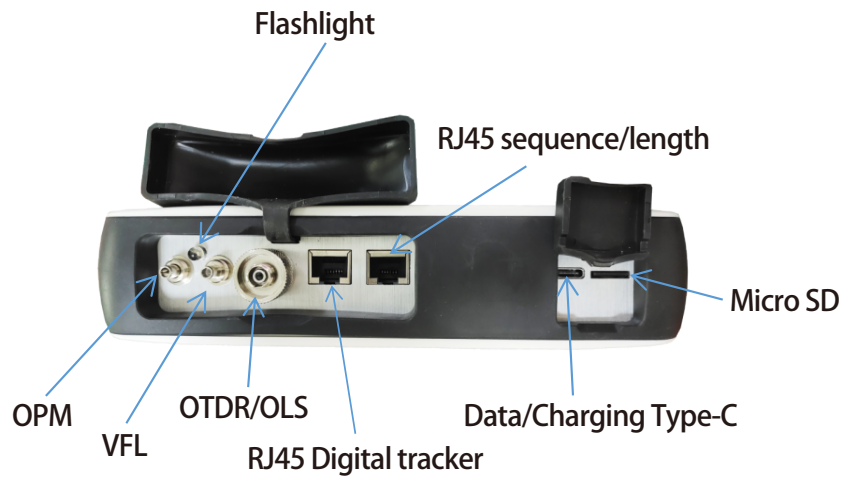
RJ45 cable length test



RJ45 cable digital tracker(Optional)



## Appearance



## Specifications:

Items	Specifications
Model	FHO3000L
Fiber type	G.652 SM fiber
Wavelength	1310nm/1550nm
Dynamic Range	26/24dB
Event deadzone	2.5m
Attenuation deadzone	8m
Test range	3ns~20us
Pulse width	500m/1km/2km/4km/8km/16km/32km/64km/100km
Distance accuracy	$\pm(1m+0.005\% \times \text{test distance} + \text{sampling resolution})$
Linearity	$\pm 0.5\text{dB/dB}$
Sampling points	16k~128k
Sampling resolution	0.05m~8m
Loss resolution	0.001dB
Distance resolution	0.001m
Loss threshold	0.20dB
IOR setting	1.00000~2.00000
Reflectance accuracy	$\pm 3\text{dB}$
File format	SOR standard file format
Loss test mode	4-point/5-point method
Laser safety level	Class II
Optical port	FC/UPC (SC, ST is optional)

Refresh rate	3Hz(Typ.)
<b>OPM</b>	
Working wavelength	800nm~1700nm
Calibrated Wavelength	850nm/980nm/1300nm/1310nm/1490nm/1550nm/1625nm/1650nm
Test range	-70~+10dBm/-50~+26dBm
Resolution	0.01dB
Accuracy	±5%
Frequency identification	CW/270/330/1k/2kHz(Use inner LS)
Optical port	Universal FC/SC/ST
Wavelength recognition	Support
<b>VFL</b>	
Wavelength	650nm±20nm
Output power	≥10mw
Mode	CW/1Hz/2Hz
Optical port	FC/UPC (Interchangeable SC/ST)
Laser safety level	Class III
<b>OLS</b>	
Wavelength	1310nm/1550nm
Laser type	FP-LD
Power	≥ -5dBm
Stability	CW, ±0.5dB/15 min(after 15min of preheating)
Optical port	FC/UPC (Interchangeable SC/ST)
Mode	CW/270Hz/330Hz/1kHz/2kHz
<b>Optical loss test</b>	
Wavelength	Consistent with LS
IL test	Support
<b>RJ45 digital tracker (Optional)</b>	
Mode	Digital tracking
Distance	≤300m
Online/Line pair tracking	Support

RJ45 cable line sequence/length	
Test distance	≤300m
Others	
Display	5 inches color capacitive touch screen
Data storage	8GB TF card
Battery	5000mAh lithium battery
Data/Charging interface	USB Type-C
Working temperature	-10°C~+55°C
Storage temperature	-40°C~+70°C
Humidity	0~95% (No condensation)
Size	195x140.5x46mm
Weight	693g

## Standard Package

Main unit, SC connector, Charging adapter, Type-C cable, RJ45 remote module, Strap, Quick guide, Calibration certificate

